



City of Prineville, OR

*Goal 5 Inventory, ESEE Analysis & Natural Features Overlay District  
2006-2009*

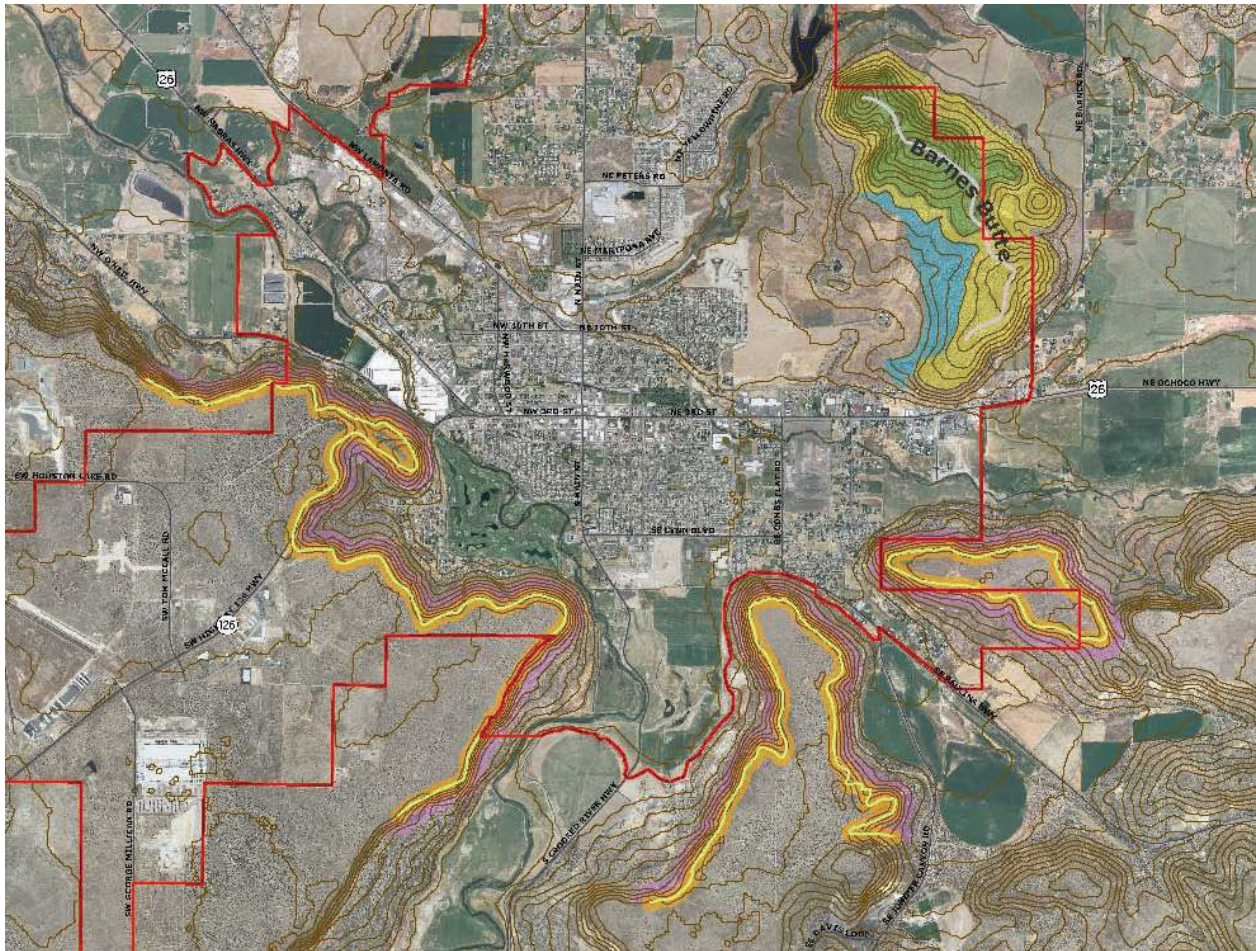


Figure: Prineville Goal 5 Resource Map - Scenic Resources

Winterbrook conducted a comprehensive Goal 5 natural and scenic resource inventory addressing wetlands, riparian corridors, wildlife habitat and scenic views and sites, floodplains and slope hazard areas within and immediately outside the Prineville UGB. This project required coordination with Crook County, DLCDC, ODFW and the BLM. Winterbrook prepared detailed findings (ESEE Analysis) in support of a limited protection decision. The Goal 5 inventory, ESEE Analysis and implementing Natural Features Overlay District was adopted by the City Council in October 2009.